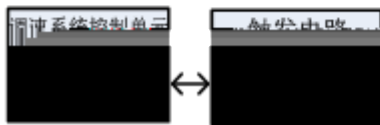
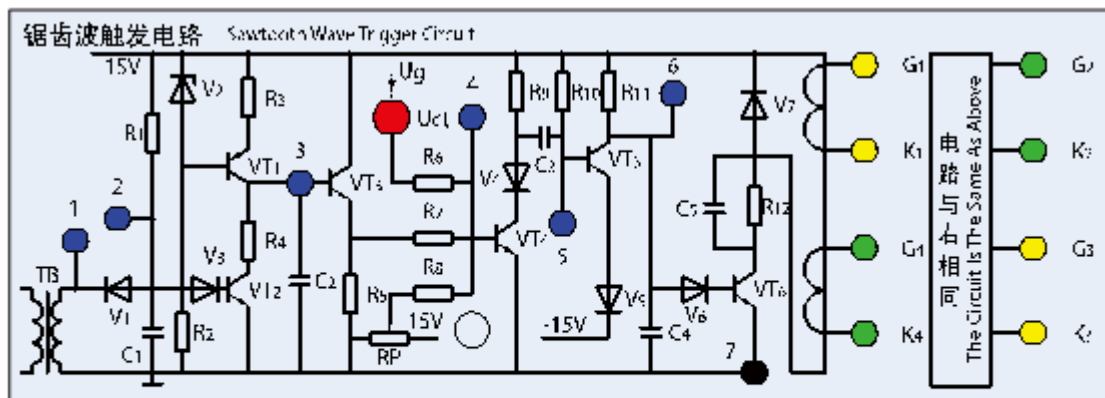


1  
2

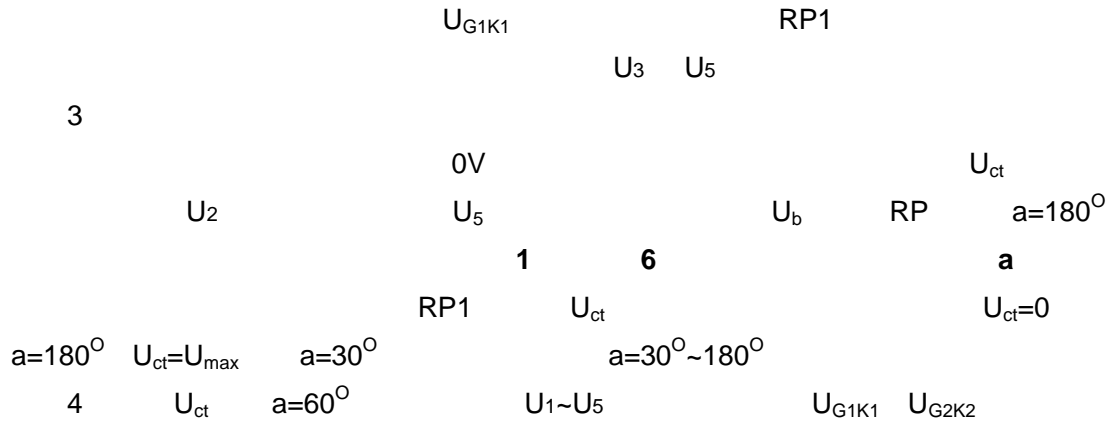
1  
2

- 1 NMCL-32/MEL-002T
- 2 NMCL-05E NMCL-05D
- 3 **G** **U<sub>g</sub>** NMCL-31 NMCL-31A SMCL-01
- 4 Uct



1 2  
 3 4  
 5 6

1 U V  
 2

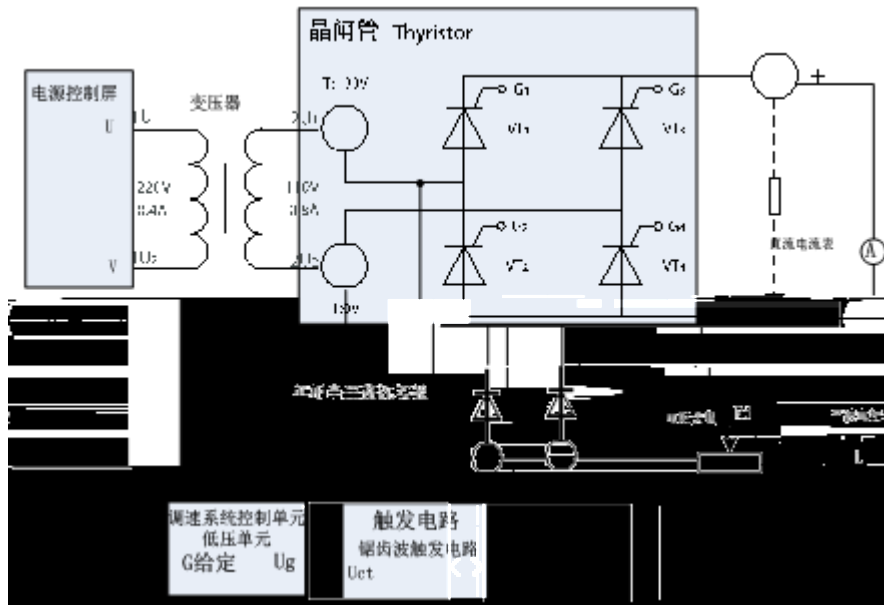


1  
 2  
 3 U<sub>ct</sub>=0 a=90°  
 4

1  
2  
3

4 1

1 NMCL-32/MEL-002T  
 2 NMCL-05E NMCL-05D  
 3 **L** NMCL-331  
 4 **Rd** NMEL-03/4 NMCL-03  
 5 **G** **Ug** NMCL-31 NMCL-31A SMCL-01  
 6 **Uct**  
 7 NMCL-33 NMCL-33F



4 1

1  
2

1  
3  
5

2  
4  
6

1  
2  
1  
2  
3  
3

5A

$U_{ct}=0$

$U_{ct}$

$U_{ct}$

1  
a)

U V

b)

$U_{G1K1}$

$U_2$

$U_5$

0V

$U_b$

RP

$U_{ct}$

$a=180^\circ$

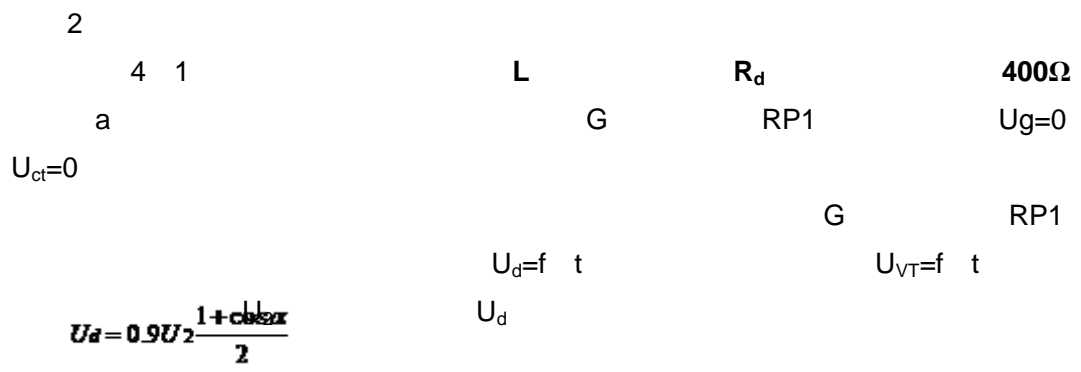
$U_{ct}=0$

$a=180^\circ$

RP1

$a=30^\circ \sim 180^\circ$

$U_{ct}$

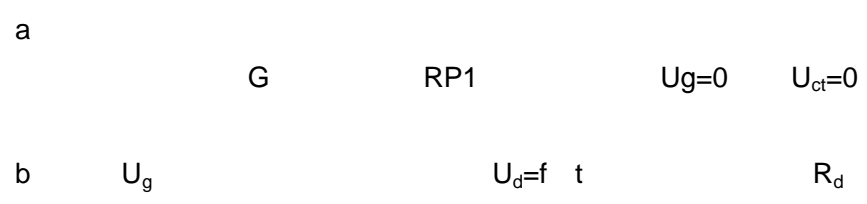


b

$U_d$   $U_{vt}$

	$U_d$		$U_{vt}$	
a=60				
a=90				
a=120				

3



c

$U_g$  60° 90° 120°

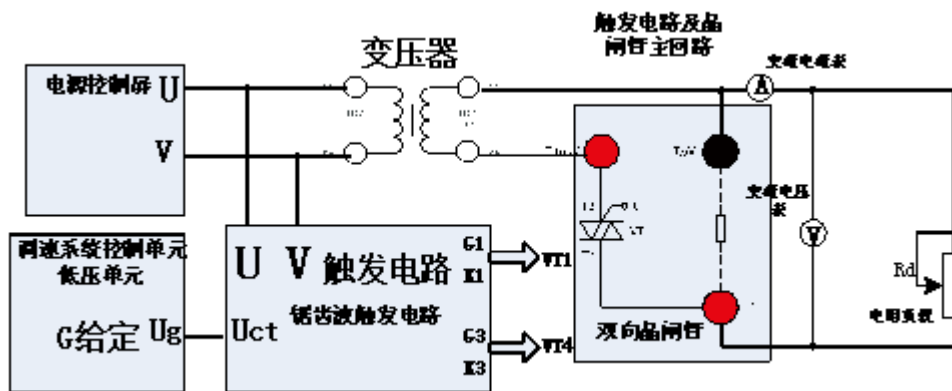
	$U_d$		$U_{vt}$	
a=60				
a=90				
a=120				

1  
2

1  
2

10-1

- |   |           |           |                  |          |         |
|---|-----------|-----------|------------------|----------|---------|
| 1 |           |           | NMCL-32/MEL-002T |          |         |
| 2 |           |           | NMCL-05E         | NMCL-05D |         |
| 3 | <b>Rd</b> |           | NMEL-03/4        | NMCL-03  |         |
| 4 | <b>G</b>  | <b>Ug</b> | NMCL-31          | NMCL-31A | SMCL-01 |
| 5 | Uct       |           |                  |          |         |



1  
3  
5

2  
4

$a < j$

1

G

RP2

RP1

$a = 150^\circ$

ct

$U_{ct} = 0$